

235 000 €

Buying house

Surface : 70 m²

Surface of the land : 421 m²

View : Jardin

Indoor condition : to renovate

Outdoor condition : to renovate

Benefits :

Puits, Forage, Fosse septique aux normes,
Remise 90m2, Calm

2 bedroom

1 terrace

1 bathroom

1 parking

Energy class (old measure) : Unavailable

Climate class : Unavailable



House MV169 Saint-Rémy-de-Provence

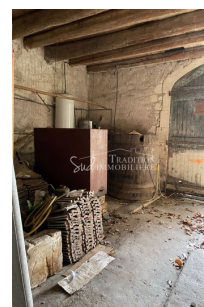
House of approx. 70 m2. with shed which once restored will regain all its poetry and its charm of yesteryear ... Land of 420 m2 approx. Great opportunity!

Fees and charges :

235 000 € fees included

Document non contractuel

05/03/2024 - Prix T.T.C



Tradition Sud Immobilière - 56 avenue de la vallée des Baux - 13520 Maussane-les-Alpilles

Tél: +33 (0)4 90 54 70 02 - Fax: 04 90 54 78 86 - traditionsud@wanadoo.fr

Carte professionnelle délivrée par la CCI Pays d'Arles N° CPI 1301 2016 000 007 005

RCS TARASCON 489 990 200 - Code NAF 6831Z

Adhérent SNPI - Médiateur : MEDIMMOCONSO, 1 Allée du Parc de Mesemena - Bât A - CS25222 - 44505 LA BAULE CEDEX / Site internet :

<https://medimmoconso.fr>

*Prix F.H.I. T.T.C - Document non contractuel

